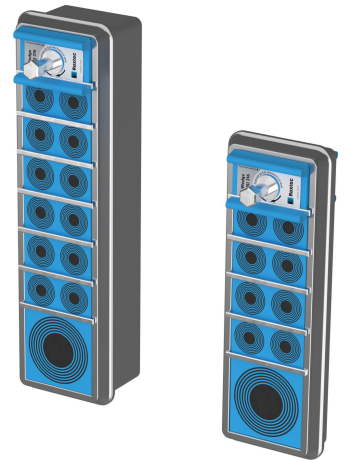




# Roxtec C LW/K 穿隔系统

用于焊接到结构的轻型穿隔系统。

Roxtec C LW/K 是一款紧凑、轻便而又非常坚固的密封解决方案，适用于多电缆和管道穿隔。穿隔框架由铝制成，并有五种不同尺寸可供选择，并且有不同的深度版本。C LW 框架的深度为 30 毫米，而 C LW K 框架的扩展深度为 60 毫米。它们通过焊接固定在结构上。其密封模块可适配各种尺寸的电缆，并可在穿隔系统内提供备用容量。它具有穿隔入口保护、防火保护以及防振电缆固定功能，是轨道交通及车辆行业中地板和墙体穿隔密封应用的理想选择。



- 轻型
- 节省空间
- 具有内置备用容量

## 产品特性



耐火



IP/UL NEMA

## 安装结构



箱柜和机柜



金属

## 安装类型



焊接

## 等级和证书

### 火灾

- E/EI 等级符合 EN 45545 E30
- 符合 EN 45545-2 的 R22、R23 标准 HL3 等级要求

### 密封性

- 符合 IEC 60529 标准 IP 66 防护等级

### 支持

- 冲击和振动 2 类符合 IEC 61373 标准

## 框架尺寸

mm/kg

下方的不同框架只是部分选择。要了解全部的框架和配置，请访问 [roxtec.com](https://www.roxtec.com)。

标题	框架开口	密封空间	外部尺寸 WxHxD	开孔尺寸 w x h	重量	产品编号
C LW 3x1 ALU	1	60 x 120	84.2 x 182.5 x 30	76(+1/-1) x 174.5(+1/-1)	0.27	237919
C LWK 3x1 ALU	1	60 x 120	84.2 x 182.5 x 60	76(+1/-1) x 174.5(+1/-1)	0.45	237924
C LW 4x1 ALU	1	120 x 120	144.2 x 182.5 x 30	136(+1/-1) x 174.5(+1/-1)	0.34	237922
C LWK 4x1 ALU	1	120 x 120	144.2 x 182.5 x 60	136(+1/-1) x 174.5(+1/-1)	0.56	237927
C LW 5x1 ALU	1	60 x 180	84.2 x 240.5 x 30	76(+1/-1) x 232.5(+1/-1)	0.33	237920
C LWK 5x1 ALU	1	60 x 180	84.2 x 240.5 x 60	76(+1/-1) x 232.5(+1/-1)	0.56	237925
C LW 6x1 ALU	1	120 x 180	144.2 x 240.5 x 30	136(+1/-1) x 232.5(+1/-1)	2.44	237923
C LWK 6x1 ALU	1	120 x 180	144.2 x 240.5 x 60	136(+1/-1) x 232.5(+1/-1)	0.7	237928
C LW 7x1 ALU	1	60 x 240	84.2 x 300.5 x 30	76(+1/-1) x 292.5(+1/-1)	2.47	237921
C LWK 7x1 ALU	1	60 x 240	84.2 x 300.5 x 60	76(+1/-1) x 292.5(+1/-1)	0.68	237926

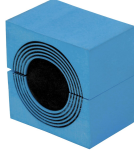


## 密封组件数据

### 密封组件



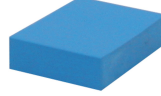
蓝色润滑脂



Multidiameter™ 多径∟  
CM 模块



C 隔层板



CM 盲堵模块



C 楔形压紧件和楔形压紧  
套件

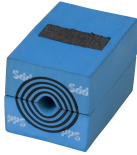


焊接工具



支架工具

### 配件



Multidiameter™ 多径∟  
CM PPS 模块

如需了解详细信息请访问 [roxtec.com](https://www.roxtec.com)。

The product information provided by Roxtec does not release the purchaser of the Roxtec system, or part thereof, from the obligation to independently determine the suitability of the products for the intended process, installation and/or use.

Roxtec gives no guarantee for the Roxtec system or any part thereof and assumes no liability for any loss or damage whatsoever, whether direct, indirect, consequential, loss of profit or otherwise, occurred or caused by the Roxtec systems or installations containing components not manufactured by an authorized manufacturer and/or occurred or caused by the use of the Roxtec system in a manner or for an application other than for which the Roxtec system was designed or intended.

Roxtec expressly excludes any implied warranties of merchantability and fitness for a particular purpose and all other express or implied representations and warranties provided by statute or common law. User determines suitability of the Roxtec system for intended use and assumes all risk and liability in connection therewith. In no event shall Roxtec be liable for indirect, consequential, punitive, special, exemplary or incidental damages or losses.

The Roxtec products are offered and sold in accordance with the conditions of the Roxtec General Terms of Sales. The latest version of the Roxtec General Terms of Sales can be downloaded from <https://www.roxtec.com/en/about-us/about-roxtec/general-terms-of-sales/>

We reserve the right to make changes to the product and technical information without further notice. Any errors in print or entry are no claims for indemnity. The content of this publication is the property of Roxtec International AB and is protected by copyright.

This document was generated on: 2026-06-21

